

# MUSEUM OF LONDON



5

LONDON WALL

MOORGATE



MOORGATE

1



BANK

3

CHEAPSIDE

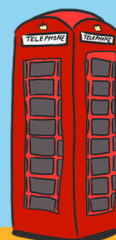


KING WILLIAM ST



MONUMENT

2



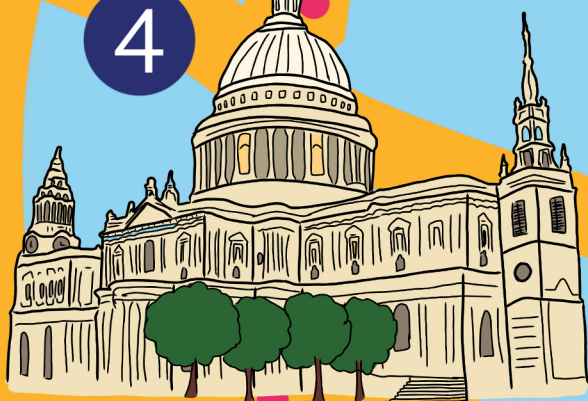
UPPER THAMES ST



QUEEN VICTORIA ST

CANNON ST

CANNON ST



4

ST MARTIN'S-LE-GRAND

# Bank to the Museum of London



As you come up through one of Bank station's many exits, you'll be brought out into Bank Junction with the Bank of England as the backdrop – one of the oldest institutions in the whole of London. It's the perfect place to start a culture-filled, family-friendly walk to the Museum of London!

The route from Bank station to the Museum of London also forms part of Culture Mile, where you can find free, unexpected events around every corner from Farringdon to Moorgate. Check out [culturemile.london](http://culturemile.london) for all the latest on upcoming activities.

The route time is based on an estimate for anyone walking from Bank to the Museum of London. More information about travelling to the museum can be found on the Museum of London accessibility page to help everyone plan their journey according to their needs.

## 1 Bank of England Museum

Want to learn more about managing money? Well, who doesn't and there's no better place to do it than at the Bank of England Museum. You can even get some weight training in while you're at it by lifting a real gold bar!



## 2 Monument

Head down King William Street after and discover the iconic column designed by Sir Christopher Wren commemorating the Great Fire of London. There's even a viewing platform where you can look out over the city. What can you see from the top of the column?



## 4 St Paul's Cathedral

Keep heading down Cannon Street and you'll find one of the most recognisable sites in London. St Paul's is as impressive on the inside as it is out – climb the dome to experience the Whispering Gallery and then head down to the crypt where you'll find memorials to famous figures including Florence Nightingale and Lord Nelson.



## 3 London Mithraeum

From Monument, head over onto Cannon Street and then up the side street of Walbrook to find the remains of a mysterious, ancient Roman temple, built next to the waters of the Walbrook as a tribute to the god Mithras. Check their website to find out about their latest family events.

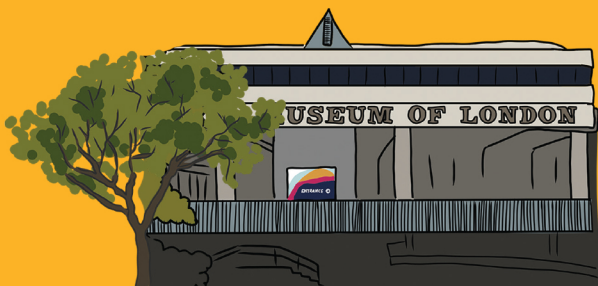


## 5 Museum of London

When you arrive at the museum, be sure to pop round and see fragments of London Wall right next to the building. This wall was built by the Romans around AD 200, to provide defence to the city of Londinium (i.e. London before it was London). It's one of the oldest surviving remnants of the city the Romans founded.

What else can you spot along the way?

Be sure to tag [@MuseumOfLondon](https://www.instagram.com/MuseumOfLondon) in any photos you post to social media on your walk [#GreatDaysOut](https://www.instagram.com/GreatDaysOut)



Please note some of the attractions and landmarks on this map may be temporarily closed, so we recommend you check in advance to avoid disappointment.