

© Museum of London 2017

These activities are designed to help Key Stage 2 pupils develop historical enquiry skills while exploring the **ROMAN LONDON** gallery. They focus on key displays and questions, and are for use by schools making self-directed gallery visits and those attending facilitated sessions.



## Roman London gallery

KS2 activity sheets

© Museum of London 2017

# Using these activity sheets

KS2 Romans



© Museum of London 2017

The eight activity sheets cover a number of themes located in different areas within the gallery.

We suggest your class explores the gallery in small groups with a supporting adult. Each group could be given different starting activity sheets, spreading pupils across the gallery to explore different topics. Individual pupils do not need to complete all eight sheets, as the whole class can share and discuss their findings back at school.

The gallery plan and Notes for Adults on the next two pages offer advice for supporting adults so they can guide pupils around the gallery.

We hope you all enjoy your visit!



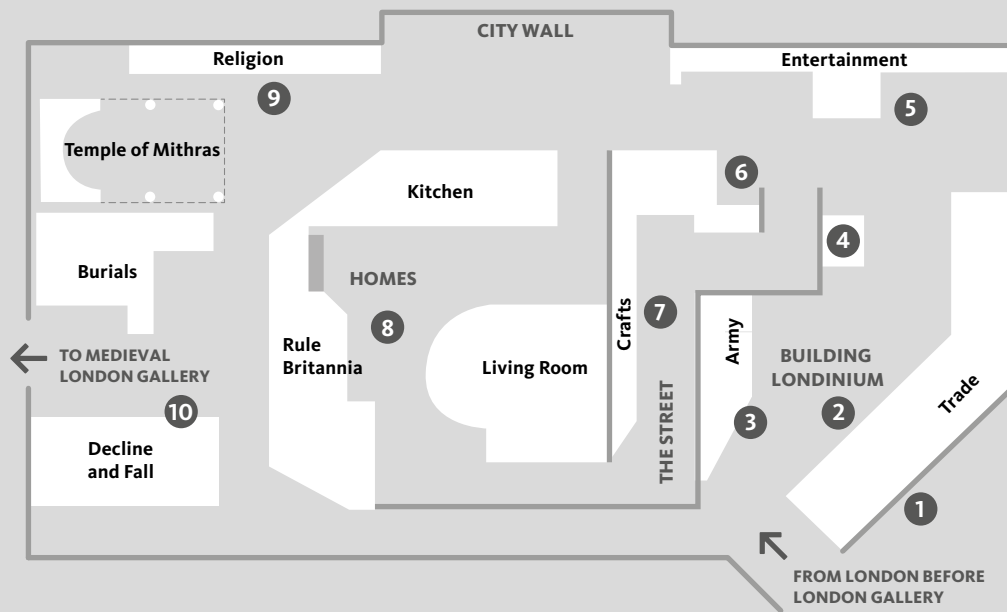
Roman London gallery  
KS2 activity sheets

© Museum of London 2017

# Roman London gallery

KS2 Romans

© Museum of London 2017



## Roman London gallery AD 50 – 410

- |                             |   |
|-----------------------------|---|
| 1 Roman London on the Map   | 6 In Sickness and in Health                       |
| 2 Adopting & Adapting/Trade | 7 Street of Craft Shops                           |
| 3 Raising Standards         | 8 Recreated Rooms                                 |
| 4 Model Port                | 9 Temple of Mithras/Spirituality and Superstition |
| 5 The Games People Play     | 10 Spitalfields Woman                             |



Roman London gallery  
KS2 activity sheets

© Museum of London 2017

# Notes for adults

KS2 Romans



## Please support your pupils by:

- exploring and learning together
- reading and discussing text and caption panels
- reading and discussing questions.

## Suggested areas for discussion:

- how archaeology helps us to understand the past
- evidence of chronological changes to Londinium while Britain was part of the Roman Empire
- comparison of themes such as power, home life, trade, language and entertainment
- how different artefacts on display might have looked when new
- similarities and differences between Roman and modern London.



Roman London gallery  
KS2 activity sheets



# Roman London gallery

KS2 Romans

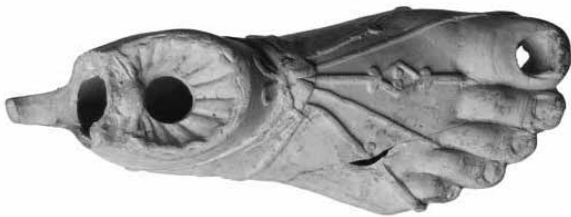
© Museum of London 2017

**FIND** the **ROMAN LONDON ON THE MAP** touchscreen computers at the entrance to the gallery.

Objects are a major source of historical evidence about life in Londinium. This map shows where archaeologists discovered some of the objects on display in the gallery.



**FIND** this object.



Where was it discovered?

.....

**DRAW** an object below – one that was discovered near where you live, or one you particularly like.

**FIND** the **ADOPTING AND ADAPTING** and **TRADE** display cases along the right-hand walls.

Can you find examples of Roman writing? Complete the words below to reveal two types of written evidence which survive from Londinium.

T \_ M \_ S T \_ \_ \_

W \_ X T \_ \_ L \_ T

**DISCUSS** the social structure of Londinium. What sort of evidence do you think we find about the lives of different people (citizens, freemen and slaves)?

**FIND** the map of the Roman Empire and the objects that were traded in Londinium. Can you find which goods came from which country?

Look out for wine and olive oil, brooches, clay figures, amber and jet.

..... came from .....

..... came from .....



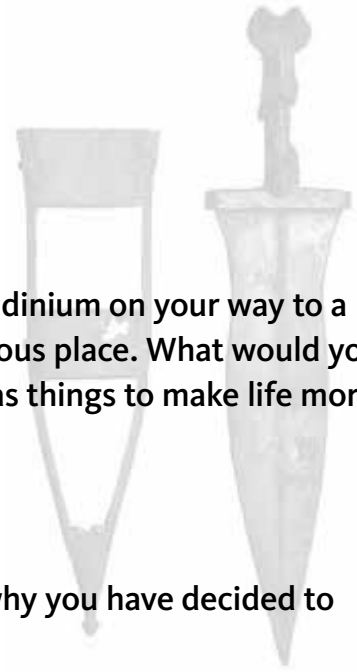
Roman London gallery  
KS2 activity sheets

© Museum of London 2017

# Roman London gallery

KS2 Romans

© Museum of London 2017



**FIND** the **RAISING STANDARDS** display.

**IMAGINE** you are a Roman soldier who has just arrived in Londinium on your way to a fort on Hadrian's Wall. It sounds like a cold, wet and dangerous place. What would you take with you? You'll need equipment and weapons as well as things to make life more comfortable in the north.

**LOOK** around the gallery and select four objects.

**DRAW** a picture of each object and write a note explaining why you have decided to take each one.

I chose this .....

because .....

I chose this .....

because .....

I chose this .....

because .....

I chose this .....

because .....



Roman London gallery  
KS2 activity sheets

© Museum of London 2017

# Roman London gallery

KS2 Romans



**FIND** the **MODEL PORT** and look at all the people working.

List some of the different types of jobs people are doing.

.....

.....

.....

Did you know the Thames provided a good trade route with the rest of the Roman Empire? This is why the port of Londinium was built where it was, and why it became such an important city.

Complete the following sentences:

The Romans built the first **B R \_ \_ G \_** across the Thames.

The Romans built an impressive network of **R \_ \_ \_ S** across Britannia.

**WATCH** the amphitheatre film showing a gladiator re-enactment.

**LISTEN** to the museum curator to find out what we can discover about one man's life and death from his skeleton.

**FIND** the **GAMES PEOPLE PLAY** display.

Tick when you have found:

- Musical instrument
- Gaming counters and dice
- Leather bikini  
(worn by a female acrobat)
- Gladiator souvenirs  
(eg little models or oil lamps).

**DRAW** your favourite object.



Roman London gallery  
KS2 activity sheets

# Roman London gallery

## KS2 Romans

**FIND** the **BATH-HOUSE** model and the **IN SICKNESS AND IN HEALTH** display.

Tick when you find each of the following objects. Make notes about what material they are made from and what they were used for.

Strigil      Used for .....      Made of .....

Manicure set      Used for .....      Made of .....

Comb      Used for .....      Made of .....

**FIND** the **STREET OF CRAFT SHOPS**. Find each of these objects – there is one in each of the four shops.

Write the name of the type of craft shop beside each object.



.....



.....



.....



.....

**IMAGINE** you have just started work as an apprentice in one of the workshops.

Draw and label some of the tools you might use.

© Museum of London 2017





# Roman London gallery

KS2 Romans

**FIND** the four recreated rooms.

Tick when you have found each room.

- |  |  |
|--|--|
| <input type="checkbox"/> AD 100 living room              | <input type="checkbox"/> AD 300 dining room (triclinium) |
| <input type="checkbox"/> AD 100 dining room (triclinium) | <input type="checkbox"/> Kitchen                         |

Look closely! Which room has a toilet hidden away in the corner?

.....

**FIND** the room which features an original mosaic floor. Do you think it belonged to a wealthy or poor Londoner?

Find three pieces of evidence to support your answer.

1. ....
2. ....
3. ....

Which of these words best describe the room? Circle your answers.

- colourful                  bare                  cramped                  welcoming  
shabby                  warm                  dull                  luxurious

**DISCUSS** what it would be like to live in these homes.

**DRAW** one of the rooms and label three of the objects in it.



# Roman London gallery

KS2 Romans

**FIND** the **KITCHEN**.

**DISCUSS** how it compares to kitchens today.

Tick any of the following objects that you can find on display in the Roman kitchen. Put a cross next to any that would not have existed in Roman times.

- frying pan       blender       spoons       plate       jug  
 microwave       glass bottle       bowl       knives

Make notes about similarities and differences between Roman cooking and our food today. Can you find any evidence about what Roman food would have been like?

.....

.....

.....

**FIND** the dressing table display.

**WATCH** the film of Roman makeup being applied.

**DRAW** some of the jewellery and hair pins.



# Roman London gallery

KS2 Romans

**FIND** the **TEMPLE OF MITHRAS**.

Christianity became the official religion of the Roman Empire in AD 312. Before this, many different gods were worshipped in Londinium.

**MATCH** these pictures of statues of different gods by drawing a line to the correct name.

Mithras

River god

Serapis

Mercury



© Museum of London 2017

**FIND** the **SPIRITUALITY OR SUPERSTITION?** display.

Tick when you have found the curse tablets.

**IMAGINE** you live in Londinium and want to make an offering to the gods. Choose an object that you think will please them. Draw it below and write a message asking for their help.



Roman London gallery  
KS2 activity sheets

© Museum of London 2017

# Roman London gallery

## KS2 Romans

### **FIND** the SPITALFIELDS WOMAN .

People from all over the world lived in Londinium. Scientific analysis of this woman's teeth shows that she grew up in a warm country such as Spain or Italy. Do you think she was rich or poor? Why?

.....

.....

.....

### **DRAW** the decoration on her sarcophagus.



© Museum of London 2017

### **IMAGINE** you are a Briton living near the impressive ruins of the city of Londinium after it was deserted by the Romans. Write a description of the ruins below.

.....

.....

### **DISCUSS** differences between Roman objects and things we use today. Suggest modern equivalents for the Roman objects listed below.

Roman London objects	Modern London objects
<b>Amphora:</b> used to hold and carry goods like oil or wine	<b>Bottles:</b> Today we store liquids in bottles made of plastic or glass
<b>Strigil:</b> used for washing – to scrape off oil and sweat in the bath-house	.....
<b>Oil lamp:</b> for lighting and could be given as a gift	.....
<b>Mosaics:</b> to decorate a wealthy home	.....

