



CREATIVE



AND



CONNECTED

SUPPORTED BY
MAYOR OF LONDON
GREATER**LONDON**AUTHORITY



ISSUE 3

Welcome to the Museum of London's Creative and Connected activity pack

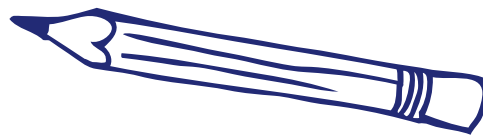
While our physical doors are currently closed, we are still here for you in these uncertain times. We are here to connect with you, to share London's stories and to listen to your story.

We hope our packs will bring joy and keep us connected. These packs are part of our Memories of London programme and are for both families and those affected by dementia.

You can use this pack in the way that feels most comfortable for you.

You could...

- **Write, draw or paint to complete the pack**
- **Grab your own paper to use alongside the pack for your responses**
- **Go digital and create your responses using your computer, tablet or phone**



FUN AND GAMES IN LONDON TOWN



This month our theme is all about play, so we're sharing a picture of this gorgeous teddy bear with you. This Steiff bear was given to a little boy as a gift in 1907, when it was the latest fashionable toy. Did you know that 'teddies' are named after a cartoon of the US president Theodore 'Teddy' Roosevelt?

**What
would you
call it?**

**Where
would you
take it?**

Maybe you have a favourite teddy, or maybe you could imagine one? What would it look like? Draw your bear here and share it with us!

Email
memories
@museumof
london.org.uk

**How would
you dress
it up?**

PLAY

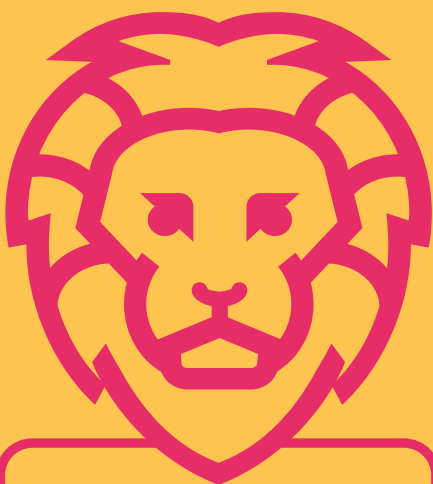
Through time, children have invented their own games, often playing on the street with neighbours and friends. Did you used to play outdoors? Or perhaps you do now!

What are these children doing?

Or saying? Fill in the speech bubbles.



© Henry Grant Collection/Museum of London



Roar like a
Roman Lion

Sneak like a
garden fox

Here's an idea for an outdoor game for all ages!

MOVE LIKE A BEAST OF LONDON

Wild animals have lived in London for centuries. Animals move in different ways. Find a space and try to copy the way they move...

Trump like a
Victorian zoo
elephant

Peck like a
London
pigeon



WORDSEARCH

P	P	J	D	D	F	S	D	T	O
V	K	S	Y	O	Y	B	R	T	D
V	F	R	K	E	L	A	U	Q	R
M	O	I	G	I	I	L	D	H	A
O	U	I	Q	N	T	L	S	V	U
H	O	P	S	C	O	T	C	H	G
D	D	E	C	E	G	K	L	P	H
Y	T	H	O	M	P	W	Q	E	T
M	A	R	B	L	E	S	F	X	S
G	N	I	P	P	I	K	S	P	M

BALL
DOLLS
DRAUGHTS
HOPSCOTCH
MARBLES
SKIPPING
SKITTLES
TRAINSET



GET CRAFTY

Poor Victorian Londoners couldn't afford expensive toys like trainsets or doll's houses. Instead, they might have bought tin penny toys, like this one, or made their own.

Create your own toy from things you find in your house or garden. Maybe it could be a...

- Stick person
- An animal made from egg boxes or a milk bottle
- Flowers might make a great dress!
- Have any spare buttons? They'd make great eyes



Make a **musical shaker** to bring along to our Memories and Music session on 6 August on Zoom.

Just put some rice, beads, seeds or pasta inside any container with a lid and shake, shake, shake away!

DRESS LIKE A LONDONER



© Henry Grant Collection/Museum of London

London is known for its vibrancy, diversity and colour. Londoners of all ages are always dressing up for big parades and carnivals.



Here's Marina, our Memories of London Coordinator dressed as a Victorian Londoner.

If you were off to a fancy-dress party, who would you dress up as?

Why not find some clothes in your wardrobe and dress up as your favourite London character? Think about using different textures, colours and patterned fabrics for a sensory experience.



MOVE AND GROOVE

Children have always made up songs and dances together. Some are about events which happened in London.

Pop! Goes the weasel

This one mentions the City Road at the centre of London. Maybe you know it?

Here are some gentle movements to do while you're singing the lyrics.



'Pop!'

Clap your hands

Half a pound of tuppenny rice

Put two fingers in the air as 'tuppenny' means 'two pence'

Half a pound of treacle

Pretend to spread treacle on bread

That's the way the money goes!

Shrug your shoulders

Half a pound of tuppenny rice
Half a pound of treacle
That's the way the money goes
Pop! goes the weasel!

Up and down the City Road
In and out The Eagle
That's the way the money goes
Pop! goes the weasel!

Up and down the City Road

Lift your arms in front of you, like a long road stretching ahead



In and out The Eagle

The Eagle was a pub. Pretend to have a swig of beer!

London's Burning is all about the Great Fire of London 1666.

London Bridge is falling down is about the many times the bridge was destroyed and rebuilt.

LONDON LIVES



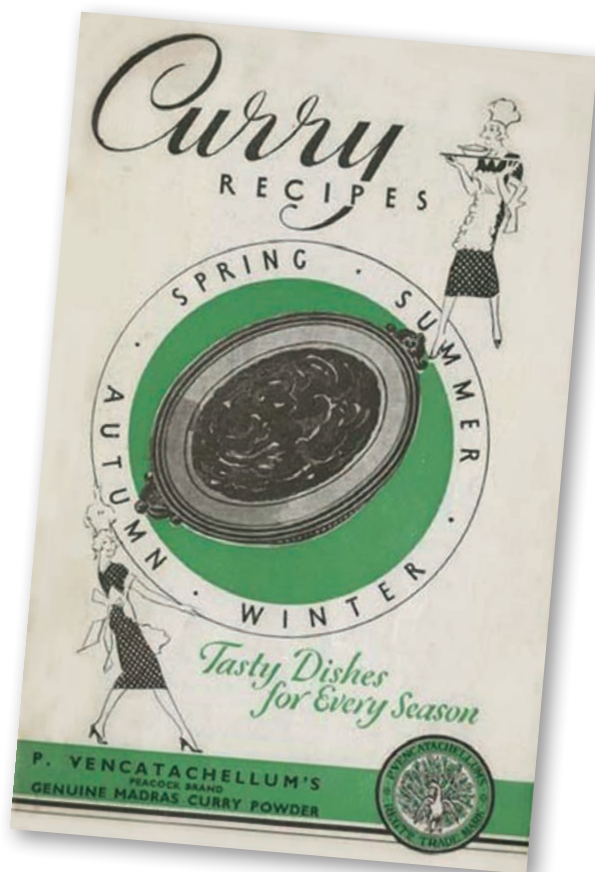
We are creating a series of podcasts called 'London Lives', inspired by different objects from our collection. Our current podcast asks you to share letters of kindness. We'd love to see yours! Share by emailing

memories@museumoflondon.org.uk

Our next podcast will be all about Londoners' favourite foods.



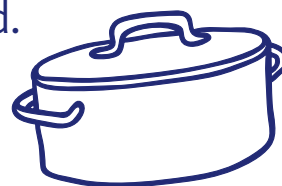
This 1930s recipe book encouraged people to experiment with foods from across the world.



What's your favourite meal?

Do you like to cook?

Do you enjoy sharing meals with family and friends?



If you'd like to share your story, email **memories@museumoflondon.org.uk** and we will get in touch to find out more.

Memories and music



As part our Creative & Connected packs why not join us for a live, online session with our artist, Luke Saydon. For our next session, we'll be bringing children under 5 and elders together to delve into history through songs and objects.

Join us on Thursday 6 August, 10.30-11.30am

To take part please register by:

Emailing **memories@museumoflondon.org.uk**

OR Calling **07780 504506** Mon-Fri, 9am-6pm

(standard network rates apply)

