



# THE CLORE CENTRE

The Clore Centre incorporates one main activity space which can be split in to 3 sections, in addition to a seminar room and studio.

It can also be used as a registration, exhibition and catering space for the Weston Theatre.

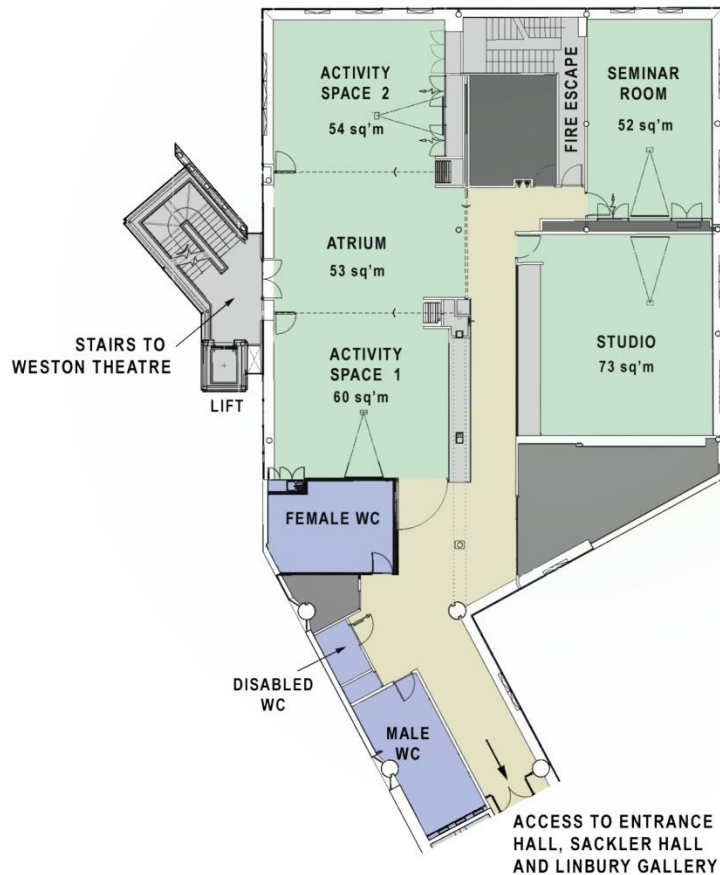
## Capacity

Activity Space		Seminar Room		Studio	
Theatre style	100	Theatre style	50	Theatre style	50
Cabaret	75	Cabaret	25	Cabaret	25
Boardroom	40	Boardroom	20	Boardroom	20
U-shape	30	U-shape	21	U-shape	21
Horseshoe	30	Horseshoe	21	Horseshoe	21
Classroom	40	Classroom	20	Classroom	20
Reception	200	Reception	60	Reception	60

# CLORE CENTRE

## Floor plan

### CLORE CENTRE UPPER LEVEL 1



0m 1 2 3 4 5

TOTAL AREA 292 sqm

#### Additional information

- Wheelchair accessible
- WiFi
- Air conditioning
- Natural daylight
- Projector & screen
- 292 sqm