



## LONDON WALL BAR AND KITCHEN

Located on the ground floor of the museum, this bright and airy space is available now and can host a variety of events including meetings and conferences for up to 72 guests, standing receptions for up to 200 and seated lunch for up to 130.

Hire of the London Wall Bar & Kitchen also includes access to the patio area just outside, which is perfect for drinks and canapés.

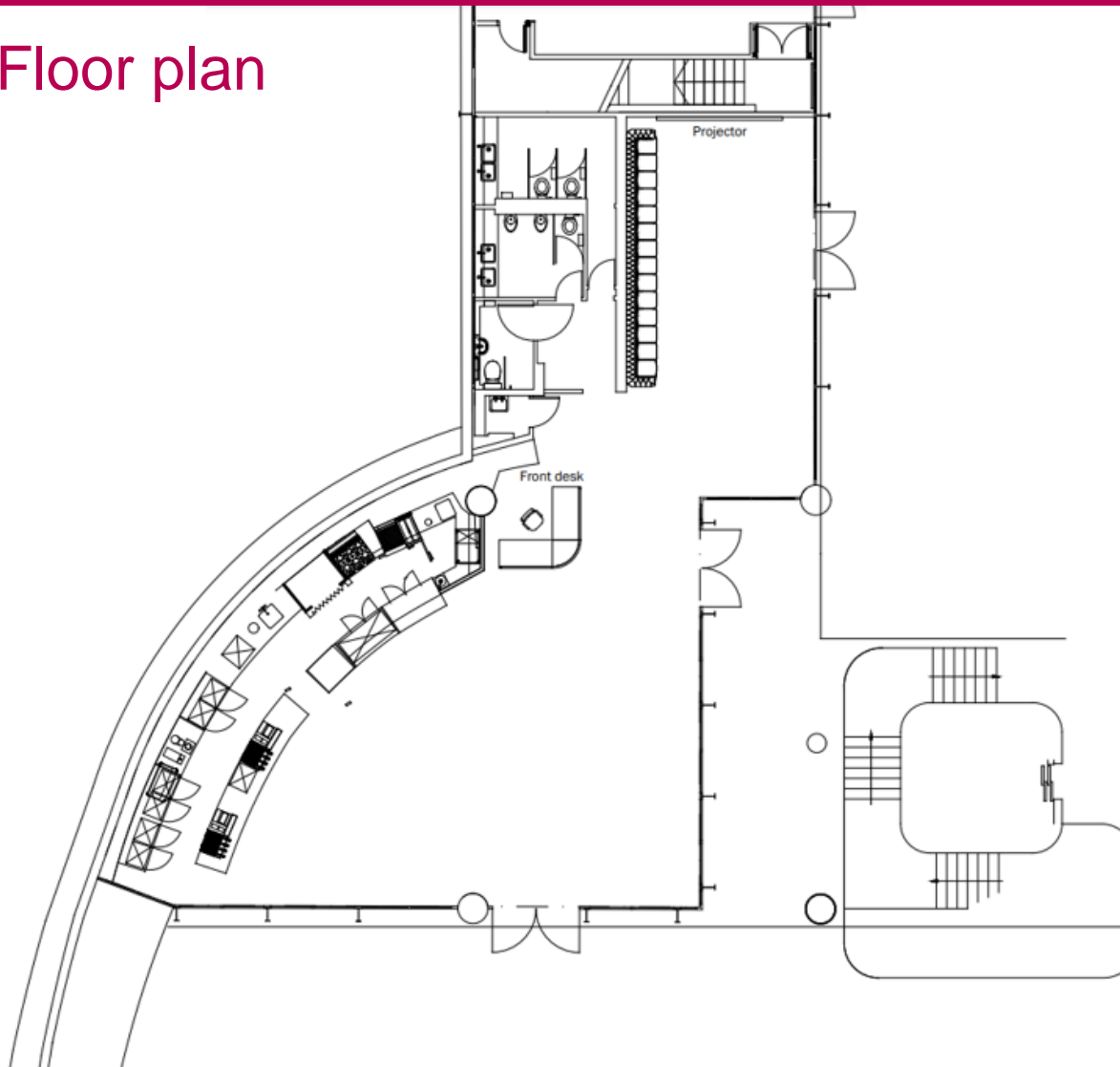
### Capacity

---

<b>Reception</b>	<b>200</b>
<b>Dinner</b>	<b>130</b>
<b>Theatre</b>	<b>72</b>
<b>Cabaret</b>	<b>54</b>
<b>Boardroom</b>	<b>24</b>

# LONDON WALL BAR & KITCHEN

## Floor plan



### Additional information

- Wheelchair accessible
- Wi-Fi
- Air conditioning
- Natural daylight
- Projector
- 50" Plasma