



# CREATIVE



# AND



# CONNECTED

SUPPORTED BY

**MAYOR OF LONDON**

**GREATER LONDON AUTHORITY**



**ISSUE 7**

# Welcome to the Museum of London's Creative and Connected activity pack

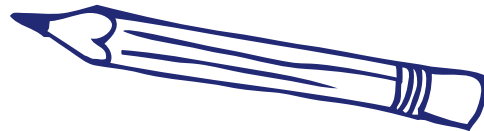
While our physical doors are currently closed, we are still here to connect with you, to share London's stories and to listen to your story. We hope this pack will bring joy, keep us connected and get your creativity flowing.

These packs form part of our Memories of London programme, designed for people affected by dementia.

You can use this pack in the way that feels most comfortable for you.

You could...

- **Write, draw or paint to complete the pack**
- **Grab your own paper to use alongside the pack for your responses**
- **Go digital and create your responses using your computer, tablet or phone**



# ALL WORK AND NO PLAY

Throughout time people have always had to work to make a living. But long gone is the 9-5 day. London, as a capital city, is a hubbub of activity 24/7 with jobs as diverse as London's communities.

This month's pack is inspired by an IBM electric typewriter in the Museum of London collection. These machines were essential for office workers from the 1930s until the invention of the computer.

Have you ever used a typewriter?

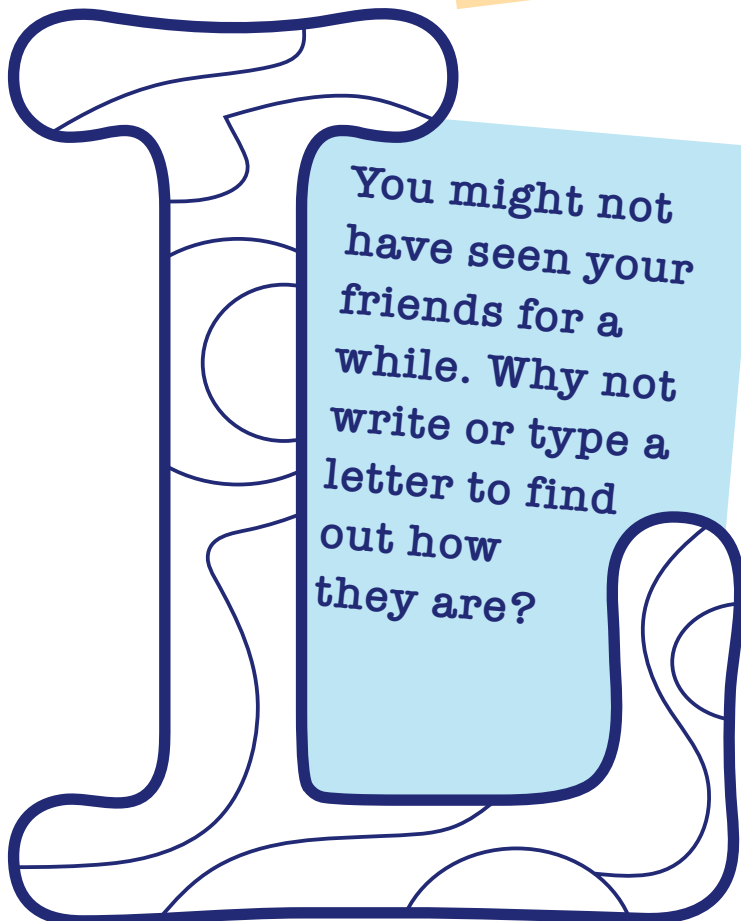


What does a typewriter sound like?

You might not have seen your friends for a while. Why not write or type a letter to find out how they are?

## DOODLE AND DRAW

Work can be stressful, but one way to relax is through colouring or doodling. We've created this typewriter-inspired letter 'L' for you to colour in at your leisure.'

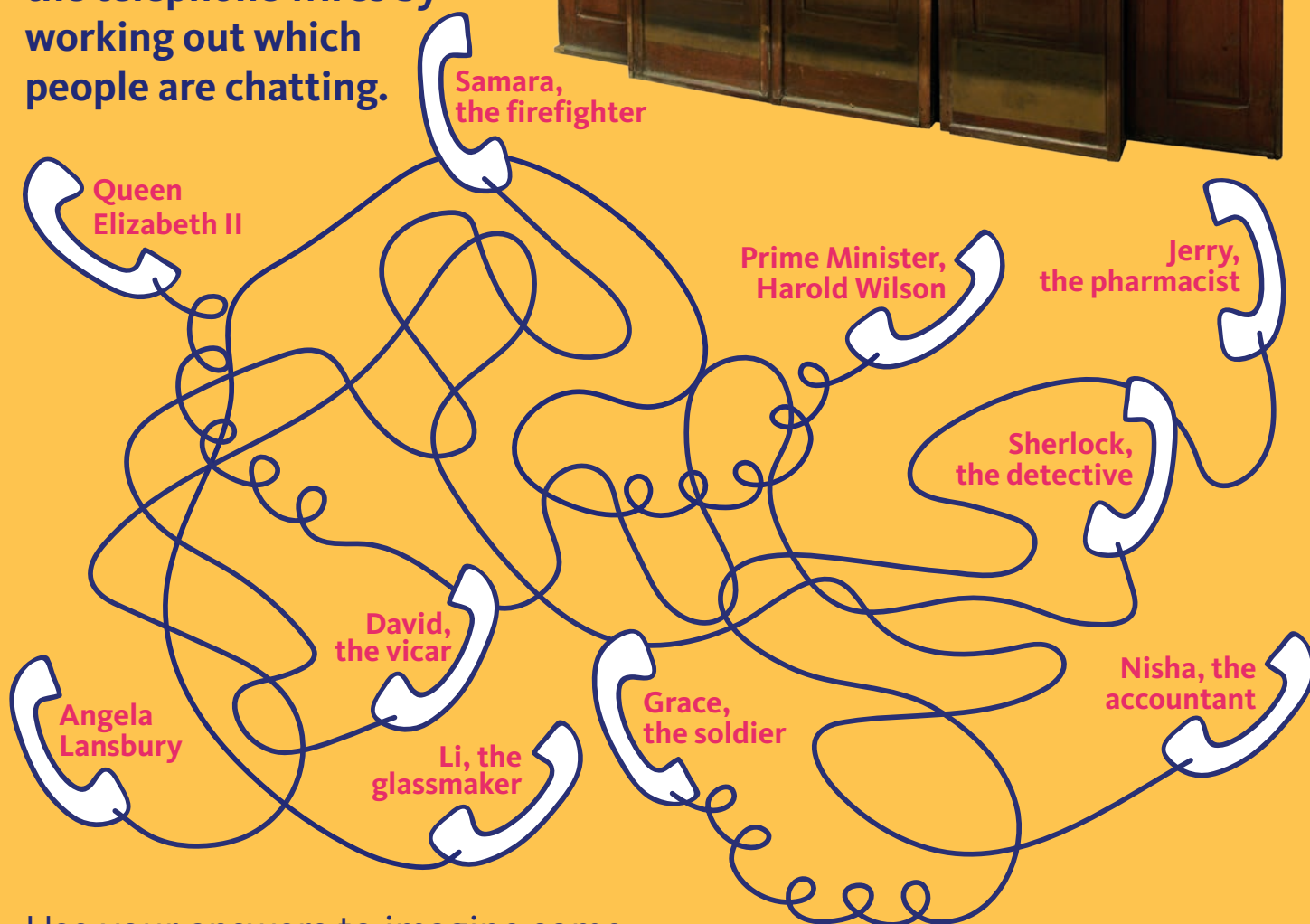


# LONDON

# 'HOLD PLEASE, CALLER'

A lucky operator once used this telephone switchboard at Buckingham Palace. Extension numbers include individual members of the Royal Family and the British Prime Minister.

**Help the operator untangle the telephone wires by working out which people are chatting.**



Use your answers to imagine some quirky conversations. We've created one one to get you started.

Grace rang Sherlock. Grace said **'I can't find my beret!'**. Sherlock replied, **'You see, but you do not observe.'**

Ever made your own telephone? Give it a go. Simply grab two paper cups, poke a hole in the bottom of them and connect them with a length of wool or string. See if you can have a conversation!



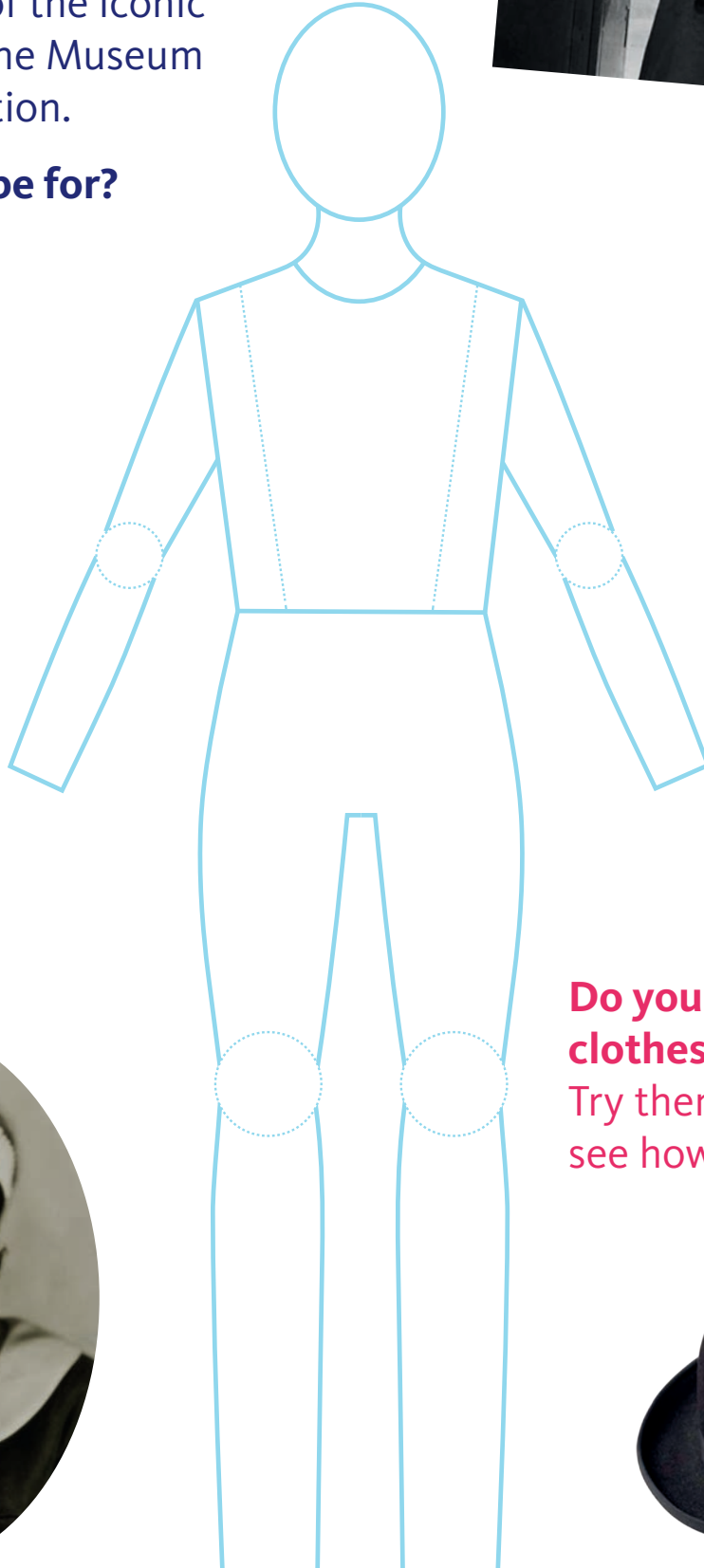
# UNIFORMITY

Many jobs have a dress code.

**Have you ever worn a uniform?**

Design a uniform to go alongside some of the iconic work clothes in the Museum of London collection.

**What job will it be for?**



**Do you have any work clothes or uniforms?**

Try them on and see how they look.



© Henry Grant Collection/Museum of London

# TOOLS OF THE TRADE

This whisk was used to make fairy cakes in a north London bakery owned by the Stanley family.

**Have you ever worked in a family business?**

Test your baking skills with this simple fairy cake recipe or bake a family favourite. Make sure to use a whisk!



## What you need

100g caster sugar  
100g very soft butter  
100g self raising flour  
2 eggs  
1 tsp vanilla extract  
Cup cake cases  
Icing sugar



## Method

1. Pre-heat the oven to 180C/ gas mark 4
2. Mix the butter and sugar in a bowl
3. Add the flour and whisk in the eggs and vanilla
4. Divide between the cupcake cases and bake for 20 minutes
5. You could mix butter and icing sugar to spread on once they've cooled

**Do you recognise these other tools?**

Dock workers used hooks to grip heavy sacks of sugar and other goods.



**Which jobs do you associate this with?**



Alongside the blowpipe, tongs were glassmakers' most important tools.



# SINGE IT ALL OFF!

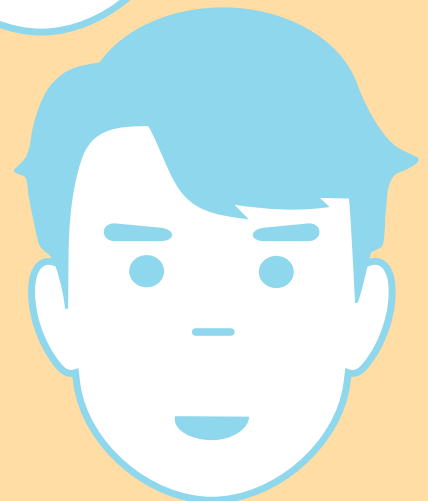
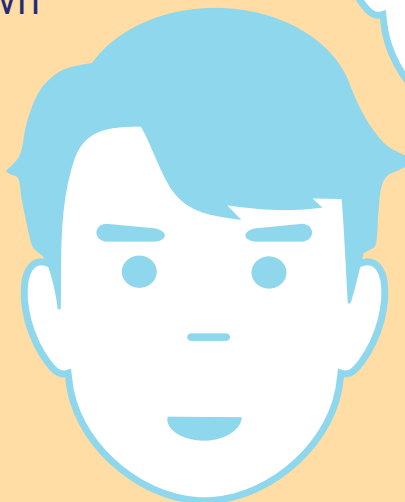
This Victorian barber shop is on display in the Victorian Walk at the Museum of London.

Victorian barbers practiced 'singeing' which involved passing a lit wax taper over a man's hair to burn it off.

Imagine the smell!



In the 1850s, stylish Victorian men were expected to adorn well-kept facial hair. Try your hand at Victorian barbering by designing your own moustaches.





# LONDON LIVES



We are creating a series of podcasts called 'London Lives', inspired by different objects from our collection. In December, we will be taking a look at age-old winter traditions enjoyed by Londoners.

**Do you follow any winter traditions?**

**Have you ever been tobogganing or played in the snow?**

If you'd like to share your story, email [memories@museumoflondon.org.uk](mailto:memories@museumoflondon.org.uk) and we will get in touch to find out more.



© Henry Grant Collection/Museum of London

## Time For a Cuppa

Why not join us to celebrate the festive season during one of our live, online sessions? This month, we're bringing you two sessions on **Thursday 3 December, 10.30-11.30am** and **Friday 18 December, 10.30-11.30am**. The Memories of London team will be sharing objects from London's past, singing, moving and chatting together in this festive-filled, relaxed session.



**To take part please register by:**

Emailing [memories@museumoflondon.org.uk](mailto:memories@museumoflondon.org.uk)

**OR** Calling **07780 504506** Mon-Fri, 9am-6pm

(standard network rates apply)

