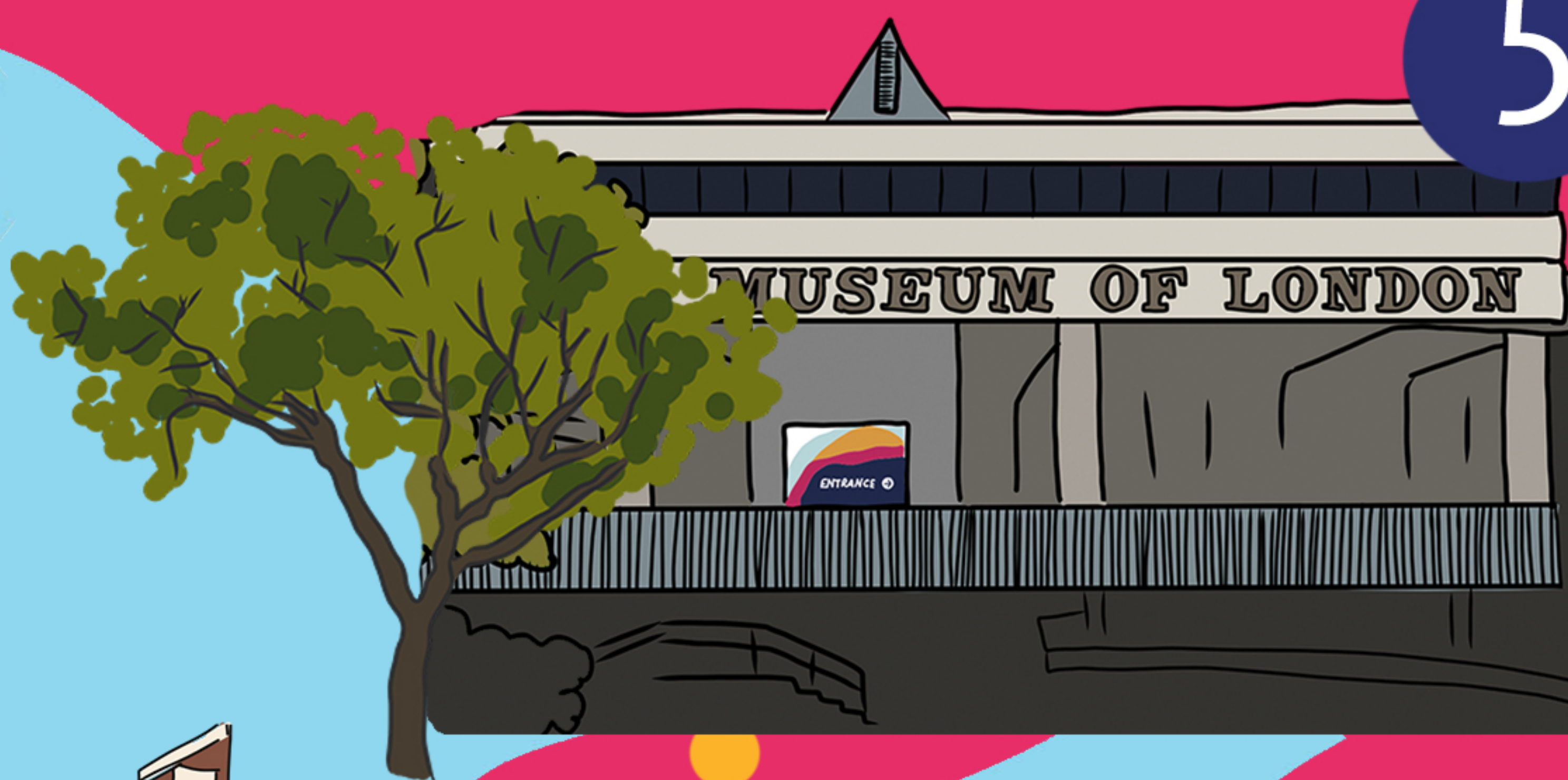


5

MUSEUM OF LONDON



4

KING EDWARDS ST

ST. MARTINS - LE-GRAND



3



2

ST. PAUL'S CHURCHYARD

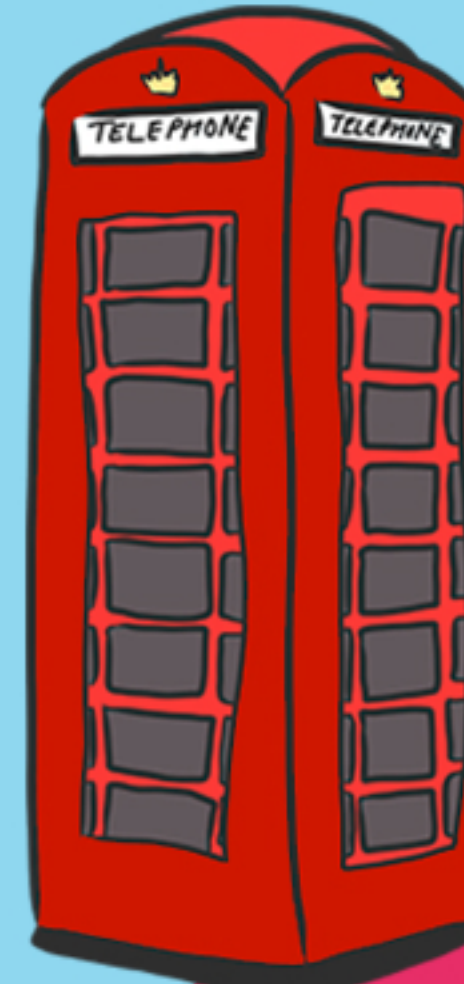
1

ST. ANDREWS HILL

SERMON LANE



QUEEN VICTORIA ST



LUDGATE HILL



OLD BAILEY

NEWGATE ST



BLACKFRIARS



Blackfriars to the Museum of London



Named after the priory first established in the area all the way back in 1224, Blackfriars is now one of the main rail interchanges for the city.

Little remains of its medieval origins sadly, but the route from Blackfriars to the Museum of London is pretty awesome, taking you past historical and cultural sites of interest that make for a fun and fascinating family walk. You'll never think the route from Blackfriars is boring again.

The route time is based on an estimate for anyone walking from Blackfriars to the Museum of London. More information about travelling to the museum can be found on the Museum of London accessibility page to help everyone plan their journey according to their needs.

1 The National Firefighters Memorial

Walk down Queen Victoria Street when you leave the station and head up Sermon Lane to see this poignant set of bronze statues, depicting three firefighters battling flames during the Blitz of World War II.



2 St Paul's Cathedral

One of the most iconic and recognisable sites in London, St Paul's is as impressive on the inside as it is out – be sure to climb the dome to experience the Whispering Gallery and then head back down to the crypt where you'll find memorials to famous figures including Florence Nightingale and Lord Nelson.



3 Festival Gardens

When you leave St Paul's, be sure to do so through these rather lovely, award-winning gardens. First created in 1951 as part of the City of London's contribution to the Festival of Britain, these green spaces include a sunken lawn and a wall fountain.



4 Postman's Park

If you walk up St Martin's-Le-Grand towards the museum from St Paul's, you'll find another beautiful garden on the left which provides a calm counterpoint to the busyness of the city. This is where you can find The Watts Memorial to Heroic Self-Sacrifice, comprised of glazed tablets each commemorating acts of bravery from across history.

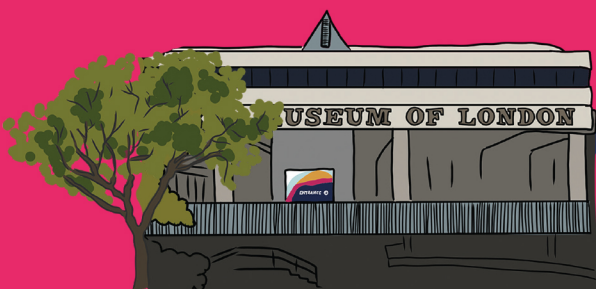


5 Museum of London

While you're making your way through Cloth Fair, one of the narrow streets that take you towards Aldersgate, you'll pass London's oldest parish church. Not only does it have a reputation for incredible Romanesque architecture, but you may also recognise it from award-winning films including *Four Weddings and a Funeral*, and *Shakespeare in Love*!

What else can you spot along the way?

Be sure to tag **@MuseumOfLondon** in any photos you post to social media on your walk **#GreatDaysOut**



Please note some of the attractions and landmarks on this map may be temporarily closed, so we recommend you check in advance to avoid disappointment.