



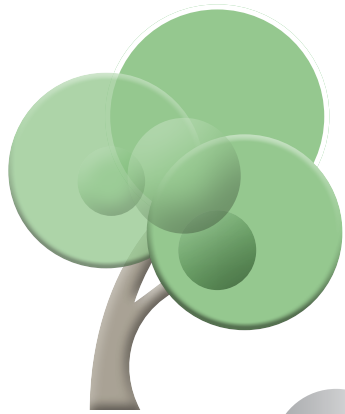
LONDON WALL



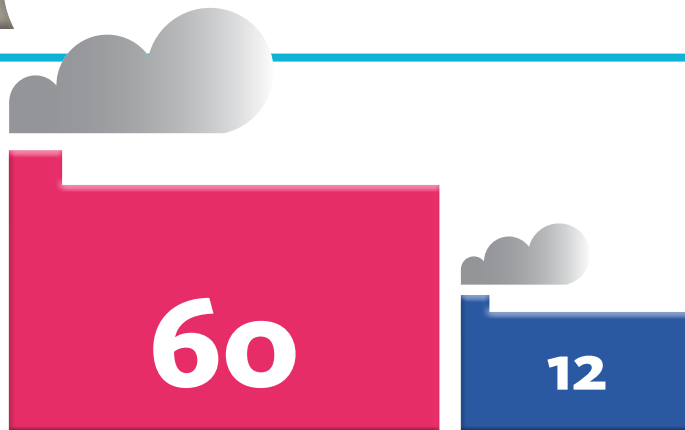
WEST INDIA QUAY

After a conscious effort to improve the level of recycling within the Museum of London, the rate has gone up to...

TREES SAVED

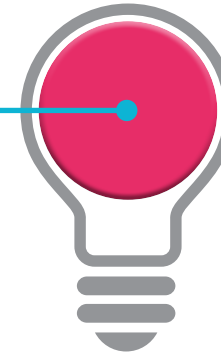


CO₂ TONNES SAVED



KWH ENERGY PRODUCED

21156



4305



RECYCLING RATE

52%



52%



AMOUNT TO LANDFILL

0%



0%



You may also be wondering how we have managed 0% landfill... all waste that is not recycled is now being used to generate energy!