



MUSEUM OF LONDON
Daytime Hire 2023



A PASSION FOR THE BEST EVENTS IN LONDON

Located in the heart of the City, the Museum of London is the ideal venue for your next conference.

The diverse selection of contemporary facilities offers versatile space for presentations, AGMs, product launches, lectures and meetings with a fantastic choice of mouthwatering menus to match.

The venue provides an inspiring backdrop for any event.





THE ENTRANCE HALL

The stylish and contemporary Entrance Hall is a popular space for daytime events including conferences and exhibitions and is perfectly situated at the front of the museum to provide a memorable welcome for guests. This versatile, blank canvas space can be transformed for daytime events with the inclusion of a stage, props and seating.

The Entrance Hall in combination with the London Ellipse Hall and its customisable 360° LED ellipse, make the perfect setting for a first-class experience.

Capacity

Reception	400
Theatre style	300
Cabaret	310
within the 360° LED ellipse	180

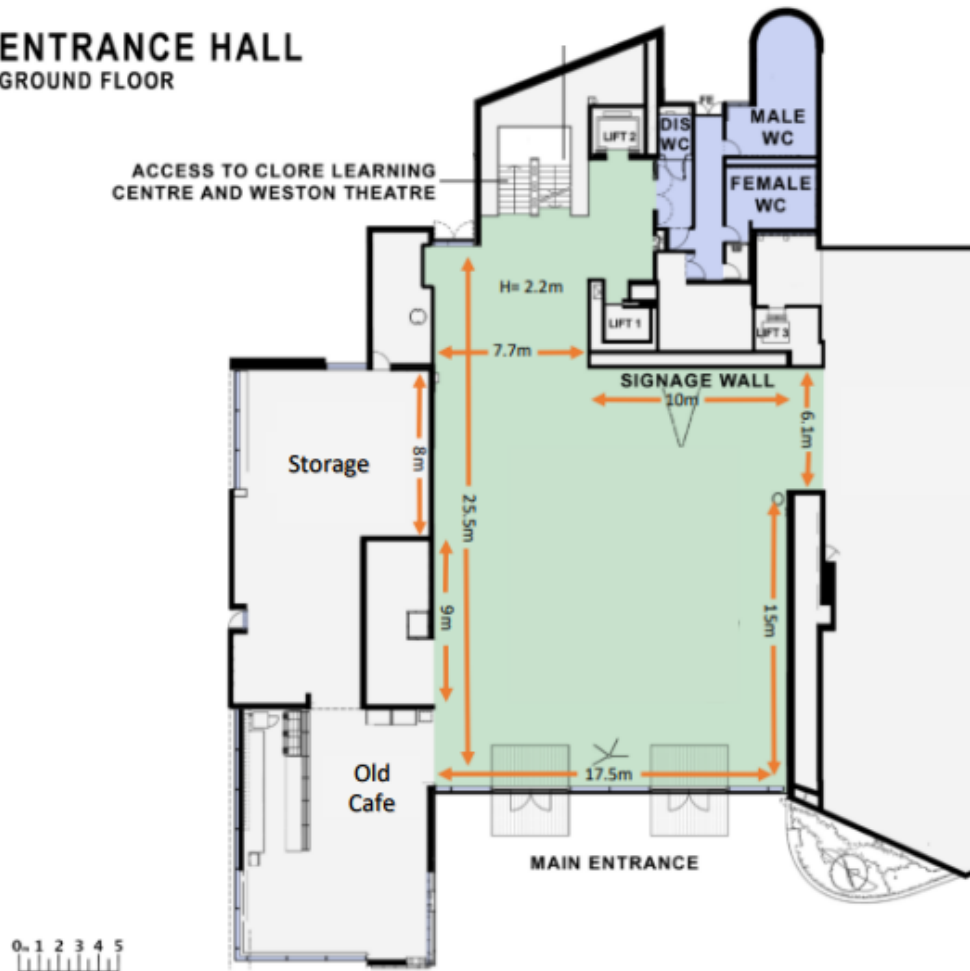
ENTRANCE HALL

Floor plan

Additional information

- Wheelchair accessible
- Wi-Fi
- Air conditioning
- Natural daylight
- Projector & screen
- 409sqm

ENTRANCE HALL GROUND FLOOR



ENTRANCE HALL 409 sqm



LONDON ELLIPSE HALL

unique event space in the heart of the museum
with a show-stopping digital ellipse and plasma
screen.

Choose from endless possibilities of showstates
from a twinkling chandelier to your own bespoke
display, perfect for award ceremonies and
celebrations.

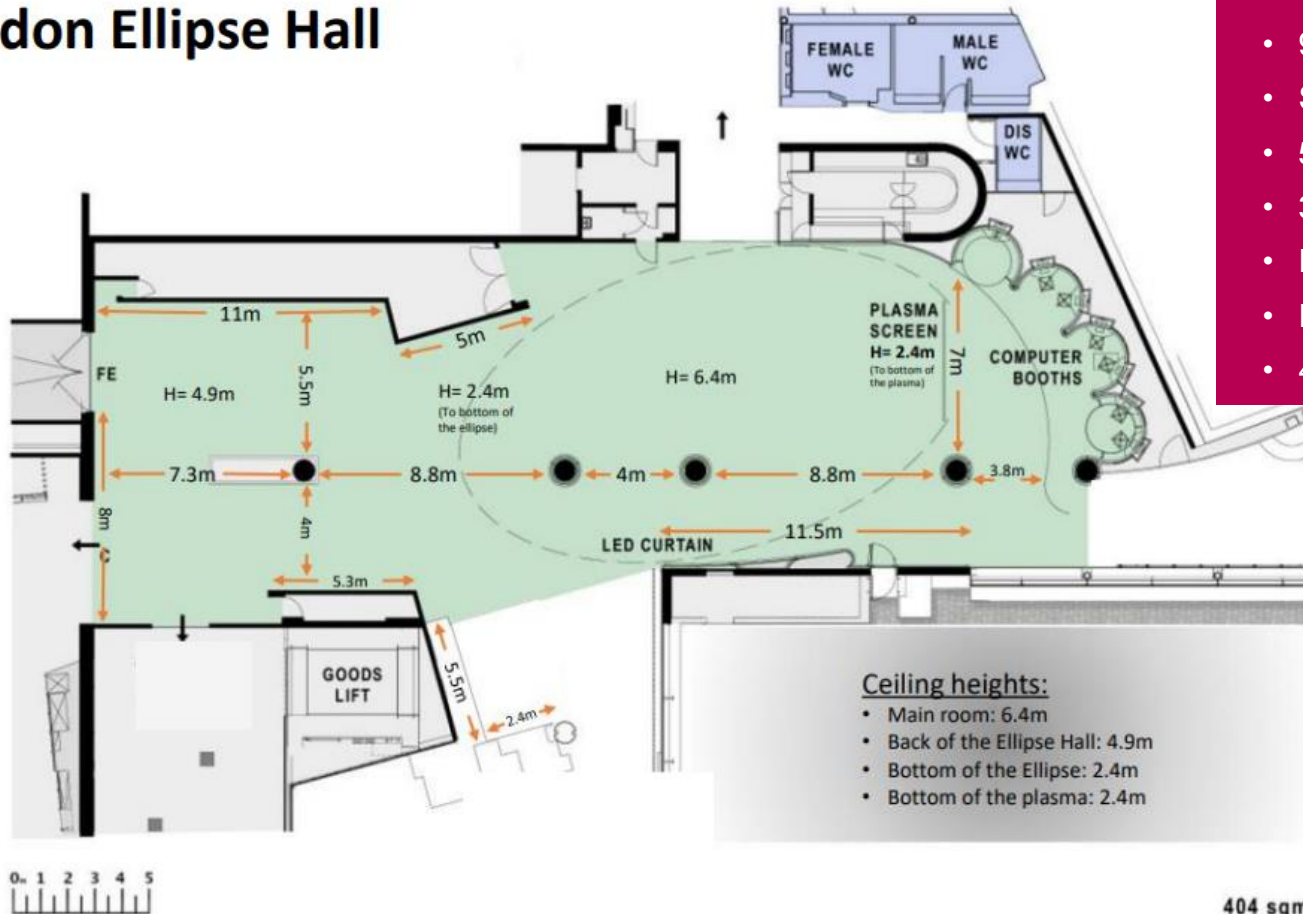
Capacity

Reception	600
Seated Lunch	420
within the 360° LED ellipse	260
Cabaret	315

LONDON ELLIPSE HALL

Floor plan

London Ellipse Hall



Additional information

- Wheelchair accessible
- WiFi
- Air conditioning
- Natural daylight
- 48m LED curtain
- 9 x 42" Plasma
- Staging and lectern
- 5.1 Audio System
- 3 Phase Power
- Pin spot lighting
- Relay camera
- 404sqm

404 sqm



LONDON WALL BAR AND KITCHEN

Located on the ground floor of the museum, this bright and airy space is available now and can host a variety of events including meetings and conferences for up to 72 guests, standing receptions for up to 200 and seated lunch for up to 130.

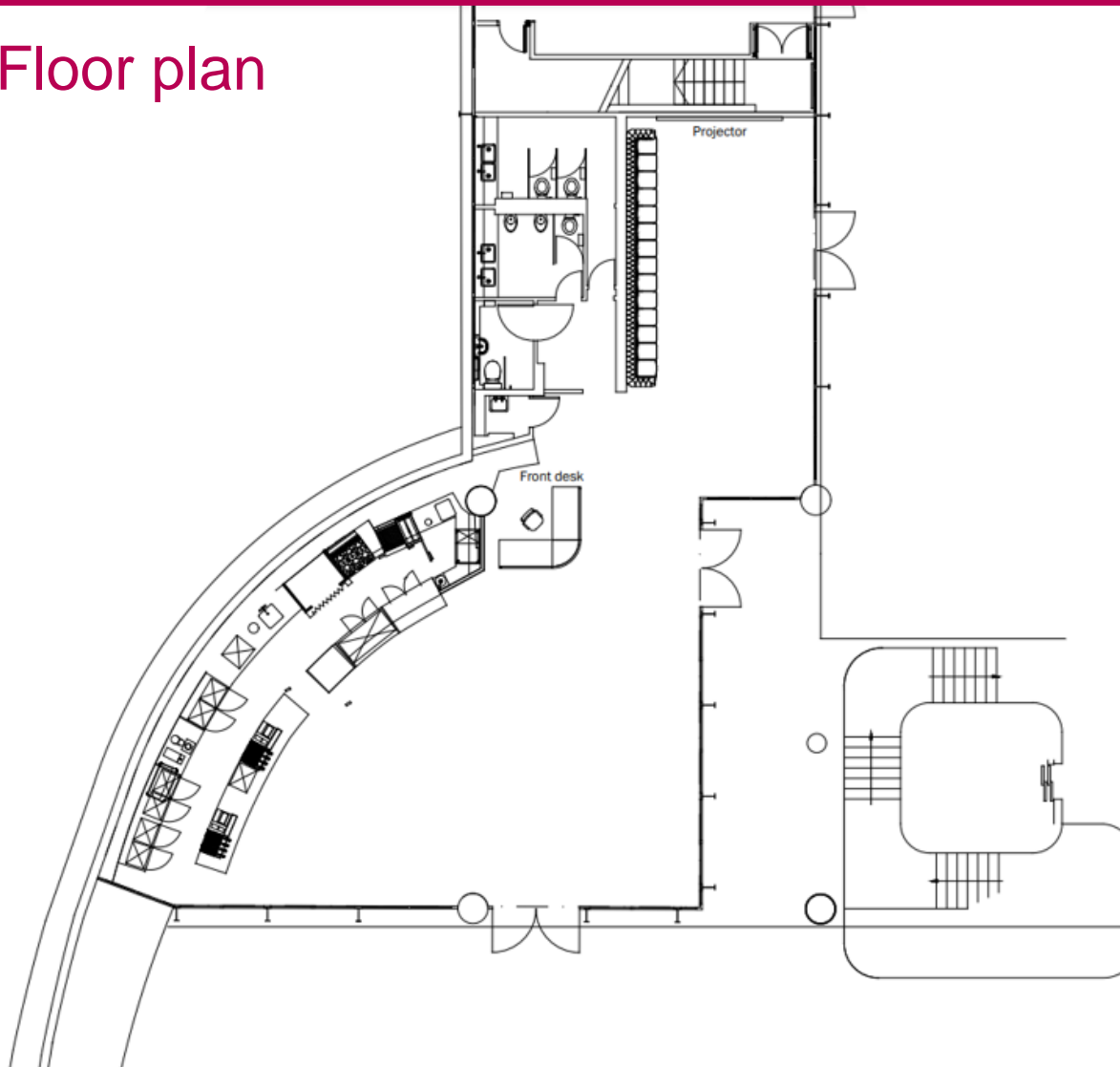
Hire of the London Wall Bar & Kitchen also includes access to the patio area just outside, which is perfect for drinks and canapés.

Capacity

Reception	200
Dinner	130
Theatre	72
Cabaret	54
Boardroom	24

LONDON WALL BAR & KITCHEN

Floor plan



Additional information

- Wheelchair accessible
- Wi-Fi
- Air conditioning
- Natural daylight
- Projector
- 50" Plasma



THE TERRACE ROOMS

With natural daylight and access to a private garden and terrace, the three stylish Terrace Rooms provide an ideal venue for a daytime meeting.

These facilities provide air conditioning, Wi-Fi and presentation equipment as standard and can be used together for larger events or as an event space in their own right.

Their private garden area offers a tranquil & peaceful setting for breaks or post-conference receptions.





THE TERRACE GALLERY

The Terrace Gallery is a popular venue for day time meetings up to 100 delegates and has direct garden access.

A data projector, screen and PA system are offered for every meeting.

Capacity

Theatre style	100	Classroom	30
Cabaret	81	Standing Reception	150
Boardroom	30	Terrace spaces	
U-shape	30	with exclusive use of the Terrace garden	250
Horseshoe	50		



THE GARDEN ROOM

The Garden Room has a capacity up to 70 delegates.

It can be used as a breakout room for the Terrace Gallery, a separate catering area or as a meeting room in its own right.

Capacity

Theatre style	70	Classroom	30
Cabaret	54	Standing Reception	100
Boardroom	30	Terrace spaces	
U-shape	30	with exclusive use	
Horseshoe	30	of the Terrace garden	250



THE TERRACE BOARDROOM

The Terrace Boardroom is an exclusive room boasting a stylish archaeological display.

Perfect for intimate meetings, it also has a built-in plasma screen which can be linked to a laptop for presentations.

Capacity

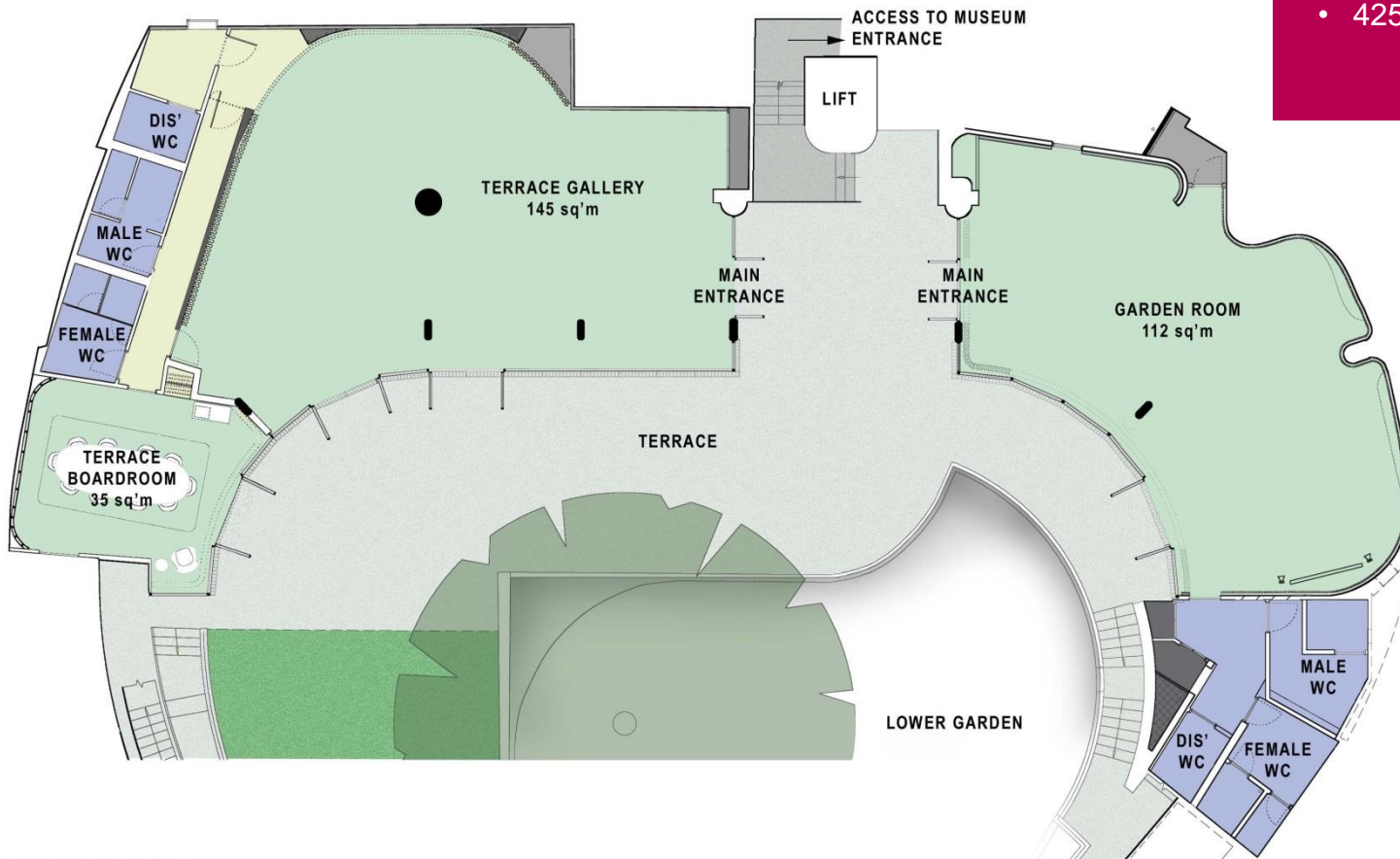
Boardroom

12

TERRACE ROOMS

Floor plan

TERRACE & ROTUNDA GARDEN



TOTAL INDOOR AREA 292 sqm

Additional information

- Wheelchair accessible
- Wi-Fi
- Air conditioning
- Natural daylight
- Projector & screen
- 425 sqm



THE WESTON THEATRE

The Weston Theatre is a purpose built lecture theatre providing a high spec venue for presentations and conferences.

It is fully equipped with PA, data projector, screen, lectern and an in-house technician. The theatre also offers full blackout facilities, air conditioning, Wi-Fi and wheelchair access.

Capacity

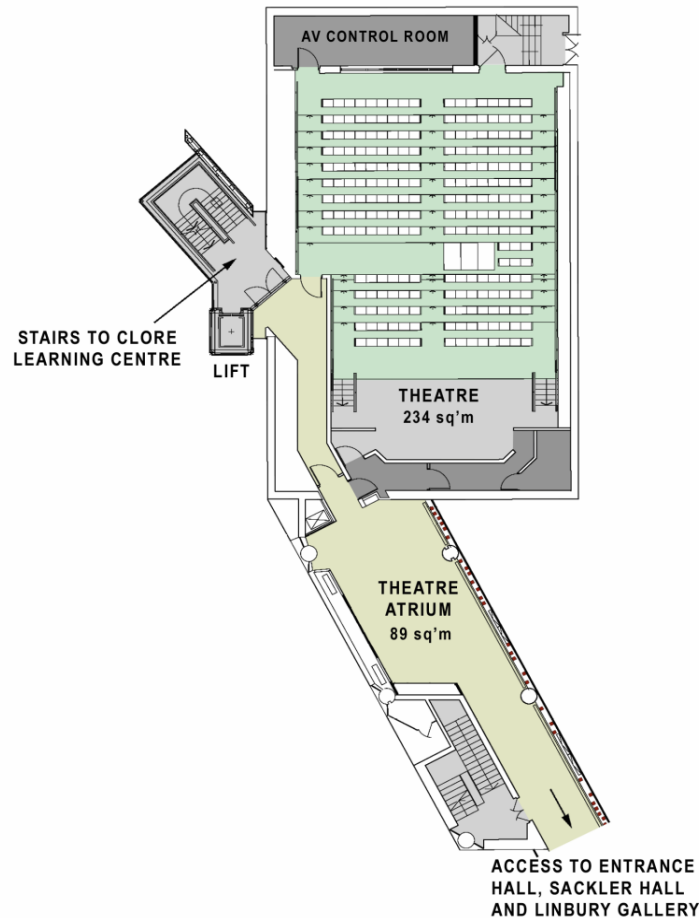
Theatre **230**

**with additional space for
wheelchairs**

WESTON THEATRE

Floor plan

WESTON THEATRE LOWER LEVEL 1



Additional information

- Wheelchair accessible
- Wi-Fi
- Air conditioning
- PA system and lectern
- Projector & screen
- In-house technician
- 323 sqm

TOTAL AVAILABLE AREA 323 sqm



THE CLORE CENTRE

The Clore Centre incorporates one main activity space which can be split into 3 sections, in addition to a seminar room and studio.

It can also be used as a registration, exhibition and catering space for the Weston Theatre.

Capacity

Activity Space 1&2

Theatre style	100
Cabaret	75
Boardroom	40
U-shape	30
Horseshoe	30
Classroom	40
Reception	200

Seminar Room

Theatre style	50
Cabaret	25
Boardroom	20
U-shape	21
Horseshoe	21
Classroom	20
Reception	60

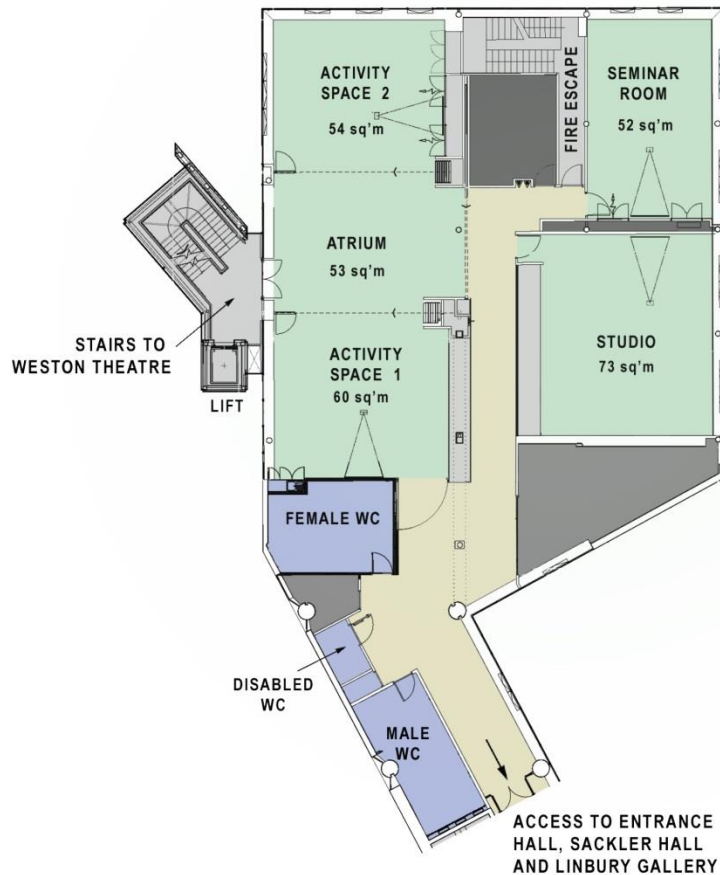
Studio

Theatre style	50
Cabaret	25
Boardroom	20
U-shape	21
Horseshoe	21
Classroom	20
Reception	60

CLORE CENTRE

Floor plan

CLORE CENTRE UPPER LEVEL 1



Additional information

- Wheelchair accessible
- Wi-Fi
- Air conditioning
- Natural daylight
- Projector & screen
- 292 sqm

TOTAL AREA 292 sqm



PRICES

Daytime Hire 9am – 5pm

Possibility to extend the hours with an additional hire fee

Combinations of rooms can be booked at a discounted rate.

Additional prices apply for catering and additional AV requirements.

All prices are subject to the addition of VAT at the standard rate.

Prices subject to alteration, please ask for a full quote.

Entrance Hall and London Ellipse Hall	£7,000
London Wall Bar and Kitchen	£2,200
Terrace Gallery	£1,700
Garden Room	£1,200
Terrace Boardroom	£580
Weston Theatre	£3,400
Clore Learning Centre	£2,300
Activity Space 1&2	£1,160



DAY DELEGATE RATE

We have Day Delegate Rate packages available to suit your needs, with options to upgrade.

All prices are subject to minimum numbers and the addition of VAT at the standard rate.

We can provide:

- Venue hire from 9am-5pm
- Tea, coffee and biscuits on arrival
- Mid-morning tea, coffee and biscuits
- Lunch
- Afternoon tea and coffee
- Water
- 1 x flipchart and pens
- Notepad and pencil for each delegate
- Event management



CATERING OPTIONS

Our list of Approved Caterers offer a range of delicious options, from working sandwich lunches to hot fork buffets, breakfast menus to themed breaks.

Our approved caterers can design a bespoke menu for your delegates. Special dietary requirements can be catered for.

At Museum of London we will be able to provide the most suitable catering option for your event.

A minimum spend may be required by our caterers.



WHY CHOOSE THE MUSEUM OF LONDON?



- Dedicated events team, including full AV support
- Unique, diverse and flexible event spaces, competitively priced
- After your day event stay with us and hold your private reception
- The Museum of London is a not-for-profit organisation. All monies raised from events hosted at the museum are used to preserve the artefacts and the history of London for generations to come and to fund our learning programme.
- Fully accessible spaces, including garden areas
- Green venue – green roof initiative & rainwater recycling programme. We also carefully vet our caterers & suppliers
- Easily accessible by public transport
- You'll be in good company – our customers love to come back to us!



CONTACT

Museum of London

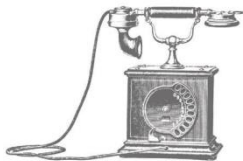
150 London Wall

London EC2Y 5HN

venuehire@museumoflondon.org.uk

www.museumoflondon.org.uk

020 7814 5789



Nearest stations:

Barbican

St Paul's

Moorgate

Mansion House