



**MUSEUM
OF LONDON**
Evening Hire



A PASSION FOR THE BEST EVENTS IN LONDON

Located in the heart of the City, the Museum of London is an extremely popular venue for evening receptions.

The beautifully designed event spaces can be hired exclusively for corporate and private parties.

The state of the art facilities offer a capacity of up to 400 guests for a reception or 220 for a dinner, fully supported by a dedicated events team.





THE ENTRANCE HALL

The stylish and contemporary Entrance Hall can host both daytime and evening events including drinks receptions, awards ceremonies, product launches and dinners.

Capacity

| | |
|-----------|-----|
| Reception | 400 |
| Dinner | 220 |

ENTRANCE HALL

Floor plan

ENTRANCE HALL GROUND FLOOR



Additional information

- Integrated bar unit
- Wheelchair accessible
- Wi-Fi
- Air conditioning
- Natural daylight
- Projector & screen
- 409sqm

ENTRANCE HALL 409 sqm



LONDON ELLIPSE HALL

Unique event space in the heart of the museum with a show-stopping digital ellipse and plasma screen.

Choose from endless possibilities of showstates from a twinkling chandelier to your own bespoke display, perfect for award ceremonies and celebrations.

Capacity

| | |
|-----------------------------|------------|
| Reception | 600 |
| Seated Lunch | 420 |
| within the 360° LED ellipse | 260 |
| Cabaret | 315 |

Floor plan

**MUSEUM
OF LONDON**



LONDON BAR AND KITCHEN

Located on the ground floor of the museum, this bright and airy space is available now and can host a variety of events including meetings and conferences for up to 72 guests, drinks receptions for up to 200 and dinners for up to 130.

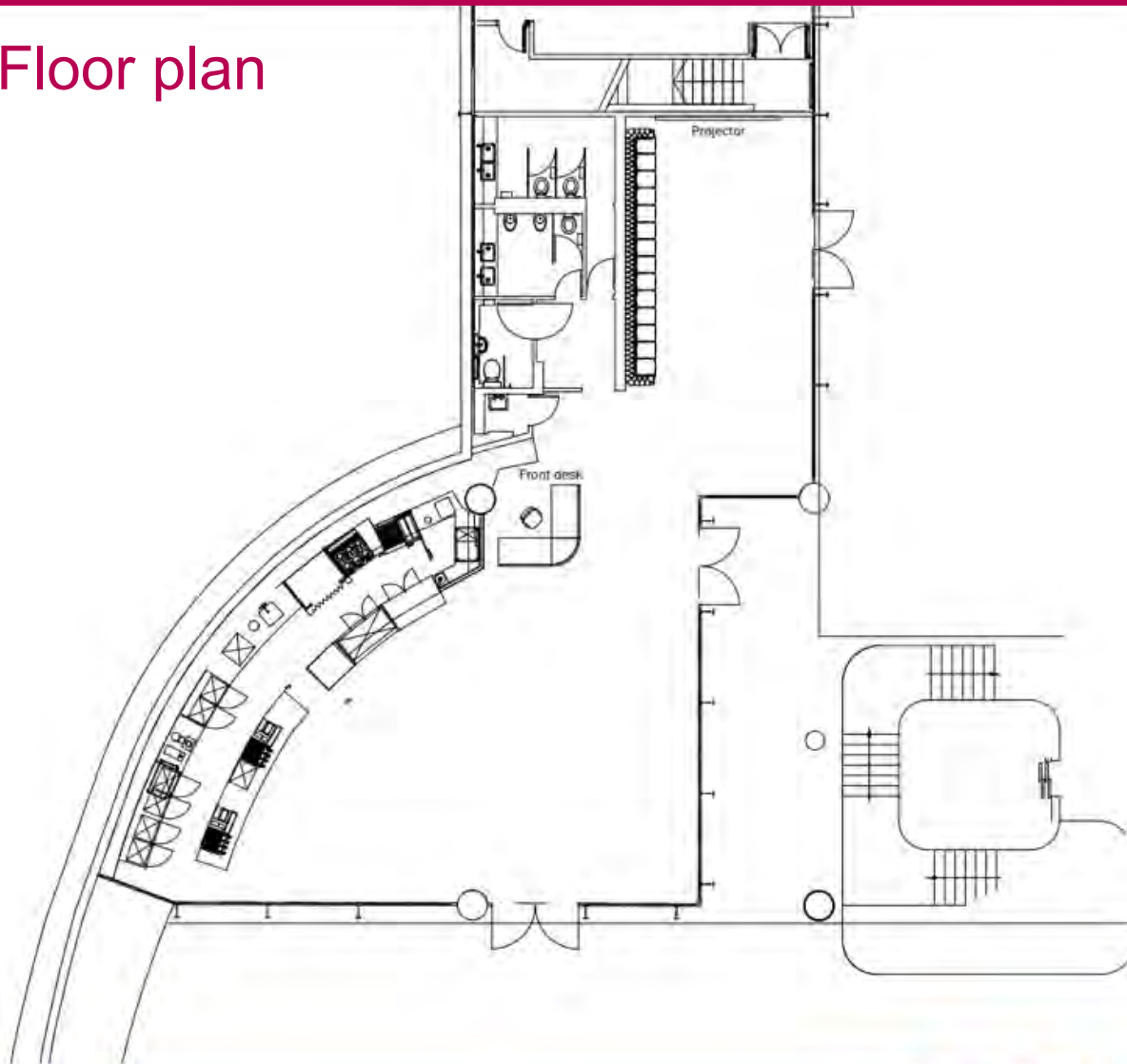
Hire of the London Wall Bar & Kitchen also includes access to the patio area just outside, which is perfect for drinks and canapés.

Capacity

| | |
|------------------|------------|
| Reception | 200 |
| Dinner | 130 |
| Theatre | 80 |
| Cabaret | 27 |
| Boardroom | 23 |

LONDON WALL BAR & KITCHEN

Floor plan



Additional information

- Wheelchair accessible
- Wi-Fi
- Air conditioning
- Natural daylight
- Projector
- 50" Plasma



THE TERRACE GALLERY

The Terrace Gallery provides a beautiful setting for an evening reception with a range of menus to match, from canapes and fork buffets to barbecues and hog roasts.

It can host dinners for up to 90 guests and receptions for 150.

Capacity

Reception **150**

Dinner **100**

Terrace spaces

with exclusive use

of the Terrace garden **250**



THE GARDEN ROOM

The Garden Room is adjacent to the Terrace Gallery. The two rooms can be combined with the garden to create reception space for up to 250 guests.

It can be used a venue in its own right for smaller dinners up to 60 guests.

Capacity

| | |
|--|------------|
| Reception | 100 |
| Dinner | 60 |
| Terrace spaces with exclusive use of the Terrace garden | 250 |



THE TERRACE BOARDROOM

The Terrace Boardroom is an exclusive room boasting a stylish archaeological display.

Perfect for intimate meetings, it also has a built-in plasma screen which can be linked to a laptop for presentations.

Capacity

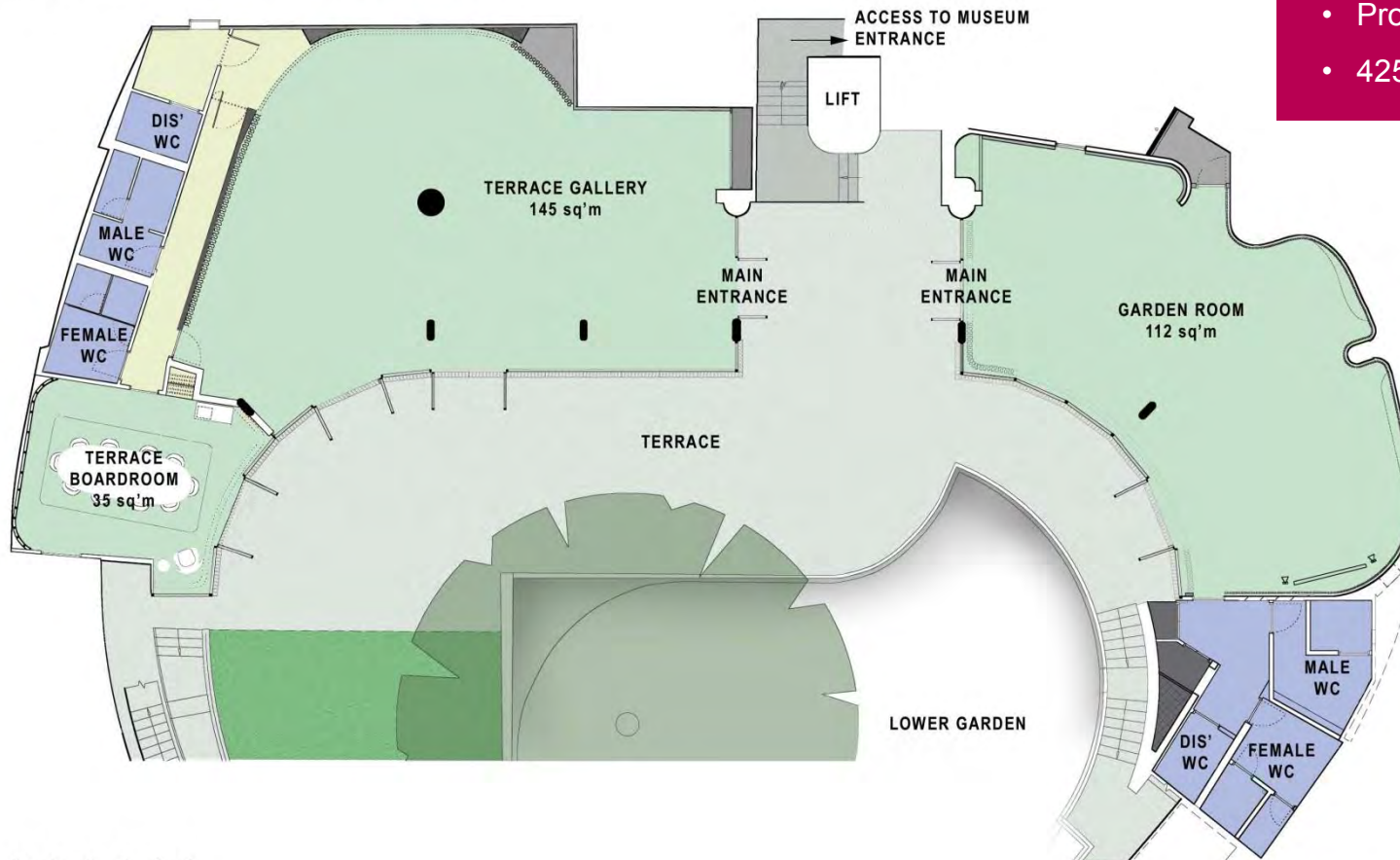
Boardroom

12

TERRACE ROOMS

Floor plan

TERRACE & ROTUNDA GARDEN



TOTAL INDOOR AREA 292 sqm

Additional information

- Integrated bar unit
- Wheelchair accessible
- Wi-Fi
- Air conditioning
- Natural daylight
- Projector & screen
- 425 sqm



THE WESTON THEATRE

The Weston Theatre is a purpose built lecture theatre providing a high spec venue for presentations, award ceremonies and screenings.

It is fully equipped with PA, data projector, screen, lectern and an in-house technician.

The Theatre also offers full blackout facilities, air conditioning, Wi-Fi and wheelchair access.

Capacity

Theatre **230**

**with additional space for
wheelchairs**



CATERING OPTIONS

The Museum of London has a carefully selected choice of caterers who can provide you with bespoke menus.

We can provide:

- Drinks receptions & canapes
- Buffet & bowl food menus
- Food stations
- Street Food
- Banquets
- Barbecues and hog roasts

All special dietary requirements can be catered for.





CATERERS

Blue Strawberry

020 7733 3151

rosanna@caperandberry.co.uk
www.bluestrawberry.co.uk

Bovingdons Catering

020 8874 8032

info@bovingdons.co.uk
www.bovingdons.co.uk

By Word of Mouth

020 8871 9566

events@bywordofmouth.co.uk
www.bywordofmouth.co.uk

Caper & Berry

01483 427 521 Libby@caperandberry.co.uk
www.caperandberry.co.uk

Food by Dish

020 8269 0398

info@foodbydish.com
www.foodbydish.com

Moving Venue

020 8691 6661

paige@movingvenue.com
www.movingvenue.com

Seasoned Events

020 7236 2149

enquiries@seasonedevents.co.uk
www.seasonedevents.co.uk

Laguna

020 8579 9992

info@LagunaRestaurant.com
www.LagunaRestaurant.com

Kerb (street food)

020 3355 6874

shilpa@kerbfood.com
www.kerbfood.com

Tony Page

020 8830 4000

Sarah@tonypage.com
www.tonypage.com



PRODUCTION & ENTERTAINMENT

Fisher Productions

020 8871 1979

samc@fisherproductions.co.uk

fisherproductions.co.uk

Broadsword

020 8776 5312

info@broadswordgroup.co.uk

broadswordgroup.co.uk

White Light

020 8524 4870

Museum.of.London@Whitelight.uk

VenuesWL.com

Light Motif

020 7183 5381

info@lightmotif.co.uk

lightmotif.co.uk

Full Circle

020 3848 7720

max@wearefullcircle.co.uk

wearefullcircle.co.uk

Young Guns

020 7495 6606

hello@younggunsgroup.com

younggunsgroup.com

Prelude

020 8660 6647

matt@preludeentertainment.co.uk

preludeentertainment.co.uk

Wise Productions

020 8991 6922

events@wiseproductions.co.uk

www.wiseproductions.co.uk



FLORISTS



Petal to the Metal

020 3797 1283

paul@petaltothemetalflowers.uk

petaltothemetalflowers.uk

Hayford & Rhodes

020 3130 9219

events@hayfordandrhodes.co.uk

hayfordandrhodes.co.uk

Pinstripes and Peonies

07739 808 695

ruari@pinstripesandpeonies.com

www.pinstripesandpeonies.com



WHY CHOOSE THE MUSEUM OF LONDON?



- Dedicated events team, including full AV support
- Unique, diverse and flexible event spaces, competitively priced
- Incorporate a tour or talk focusing on our fascinating exhibitions to make a truly memorable event
- After your event stay with us for a few drinks in London Wall Bar & Kitchen or hold your own private reception
- The Museum of London is a not-for-profit organisation. All monies raised from events hosted at the museum are used to preserve the artefacts and the history of London for generations to come and to fund our learning programme.
- Fully accessible spaces, including garden areas
- Green venue – green roof initiative & rainwater recycling programme. We also carefully vet our caterers & suppliers
- Easily accessible by public transport
- You'll be in good company – our customers love to come back to us!



PRICES

All prices are subject to the addition of VAT at the standard rate.

Prices subject to alteration, please ask for a full quote.

Evening hire 6.30 pm – 11.00 pm

| | |
|--|---------------|
| Entrance Hall | £4,800 |
| London Wall B&K | £3,000 |
| Terrace Gallery | £2,200 |
| Garden Room | £1,800 |
| Terrace Boardroom | £550 |
| Terrace spaces | |
| with exclusive use of the Terrace garden | £3,700 |



CONTACT

Museum of London

150 London Wall

London EC2Y 5HN

venuehire@museumoflondon.org.uk

www.museumoflondon.org.uk

020 7814 5789



Nearest stations:

Barbican

St Paul's

Moorgate

Mansion House