

## How to book

It is now possible to book by:

### Post

Please write to  
Call Centre  
Museum of London  
150 London Wall  
EC2Y 5HN

### Telephone

Please call the Box Office on 020 7001 9844

### Online

[museumoflondon.org.uk/friendsevents](http://museumoflondon.org.uk/friendsevents)

### Images

**Cover:** West Smithfield  
© Museum of London

**P4:** National Theatre tour  
© National Theatre

**P5:** Tunnel – The Archaeology of Crossrail  
Tudor bowling bowl  
© Crossrail/MOLA

**P5:** City of Angels  
© Alexandra Epps

**P6:** Frogmore Paper Mill  
© Frogmore Paper Mill

**P6:** Freud Museum  
© Freud Museum

**P7:** Objects which will feature in our Crossrail exhibition,  
found during the Crossrail excavations  
© Crossrail/MOLA

The Museum of London is a registered charity (number 1139250)



## Friends events

January-April 2017



## Exclusive events programme for the Friends of the Museum of London

To book call **020 7001 9844**

To find out more about the Friends call Susan Boome on **020 7814 5507**  
or visit [museumoflondon.org.uk/friends](http://museumoflondon.org.uk/friends)

# Friends events January-April 2017

## Free highlights gallery tours for Friends

We offer a free highlights gallery tour for you and your guest with our knowledgeable visitor hosts. This is an opportunity for you to explore our world-class galleries and learn more about some of our objects. For new Friends this is a great introduction to our museum.

The tour takes place on the second Sunday of each month at 11.30am. Please book in advance by telephoning our Box Office on **020 7001 9844**.

## January

### Wednesday 18 January 2017, 11am

Londoners through their portraits - National Portrait Gallery

p4

### Wednesday 25 January 2017, 3.30pm

National Theatre costume tour

p4

### Monday 30 January 2017, 2pm

Vyki Sparkes talk the Silvertown disaster

p4

## February

### Wednesday 8 February 2017, 6.30pm

Roman Holiday

p4

### Wednesday 15 February 2017, 2pm

Surviving the Great Fire of London

p5

### Monday 20 February 2017, 2pm

Tunnel – The Archaeology of Crossrail

p5

## March

### Wednesday 1 March 2017, 10.30am for 10.45am start

City of angels – walking tour

p5

### Sunday 5 March 2017, 11.15am

Frogmore Paper Mill – the story of paper

p5

### Wednesday 8 March 2017, 10.30am

The Freud Museum

p6

### Thursday 23 March 2017, 11am

The history and future of West Smithfield

p6

### Thursday 30 March 2017, 11am

Secret London Tour, with London Blue Badge Guide, Diane Burstein

p6

## April

### Wednesday 5 April 2017, 6.30pm

Paupers, pilgrims and priories

p6



### Londoners through their portraits: National Portrait Gallery

Wednesday 18 January 2017, 11am

Discover a host of Londoners 'who are most honourably commemorated in British history. Hear about diarist Samuel Pepys, magistrate John Fielding, poet Elizabeth Barrett Browning, actor Boris Karloff and more figures who feature in this tour.

National Portrait Gallery, Ondootje Wing, Main Hall Reception, St Martin's Place, London WC2H 0HE

**£9, Friends only**



### National Theatre costume tour

Wednesday 25 January 2017, 3.30pm

Join us in the Olivier Theatre for a brief history of the National Theatre and then admire the art and skill of the National Theatre costume team during our private tour of the cutting room, dye shop and wig room.

National Theatre, Upper Ground, South Bank, SE1 9PX  
Meet in Ground Floor Foyer

**£11, Friends only**



### Vyki Sparkes talk: the Silvertown disaster

Monday 30 January 2017, 2pm

On 19 January 1917, an explosion at a TNT factory in Silvertown devastated the local community. TNT was an explosive in great demand during the First World War. 73 people were killed, 400 were injured and around 70,000 properties were damaged. Discover more about the biggest single explosion to have ever taken place on London soil.

Museum of London Docklands, No.1 Warehouse, West India Quay, London E14 4AL  
**Friends £8, guests of Friends £12**



### Roman holiday

Wednesday 8 February 2017, 6.30pm

Visit the Archaeological Archive in this special themed tour that will compare the archaeology of London's Roman villas. The tour will explore life in a Roman villa focusing on the villa as a place of production, as a space for leisure and relaxation, and for ritual and spiritual living.

Mortimer Wheeler House, 46 Eagle Wharf Rd, London N1 7ED

**Friends £8, guests of Friends £12**

### Surviving the Great Fire of London

Wednesday 15 February 2017, 2pm

What happened to London after the Great Fire? Senior curator of Medieval collections, Hazel Forsyth, dips into her book *Butcher, Baker, Candlestick Maker*, to trace how the citizens, institutions and trades (from apothecary and baker to upholsterer and watchmaker) rebuilt lives and the city's former prosperity.

Museum of London, 150 London Wall, London EC2Y 5HN

**Friends £8, guests of Friends £12**

### Tunnel – The Archaeology of Crossrail

Monday 20 February 2017, 2pm

See the most complete range of archaeological objects unearthed by Crossrail with Jackie Keily, curator of archaeological collections. The wide variety of items on display explores 8,000 years of human history, revealing the stories of Londoners ranging from Mesolithic tool makers to those affected by the Great Plague of 1665.

Museum of London Docklands, No.1 Warehouse, West India Quay, London E14 4AL  
**Free, Friends only**

### City of angels: walking tour

Wednesday 1 March 2017, 10.30am for a 10.45am start

Join City of London and Tate guide Alexandra Epps for a stroll in celebration of the angels of the City. Hidden within historic streets, discover secret gardens and beautiful churches, memorials, monuments and public art, creations ranging from hand crafted to high tech in stained glass, marble and stainless steel.

The Monument, Fish Street Hill, London EC3R 8AH

**Friends £13, guests of Friends £16**

**Cost includes hire of headsets**

### Frogmore Paper Mill: the story of paper

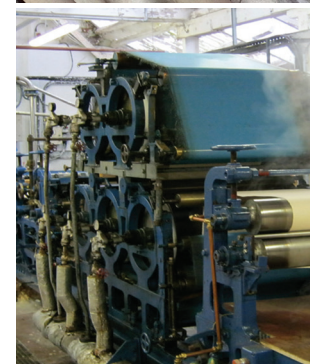
Sunday 5 March 2017, 11.15am

Visit 'the birthplace of paper's industrial revolution' and uncover the fascinating history of paper. Have a go at hand papermaking and letterpress printing as part of the guided tour of the mill and its historic equipment, followed by a boat trip to Lock 67.

11am for a 11.15am start. Frogmore Paper Mill, Fourdrinier Way, Apsley, Hemel Hempstead, Herts HP3 9RY

Warm dress is recommended

**Friends £15, Guests of Friends £19. Includes tea/coffee on arrival and boat trip**





March



### The Freud Museum

Wednesday 8 March 2017, 10.30am

A private visit to the home where Sigmund Freud, the founder of psychoanalysis, spent his final year. Following its annexation by Germany he left Austria, his home of 47 years, for England. Tour his London home with our guide, his extensive library, prized antiques and the consulting room where he practised until shortly before his death.

The Freud Museum, 20 Maresfield Gardens, Hampstead, London NW3 5SX  
**Friends £6, guests of Friends £7**



March



### The history and future of West Smithfield

Thursday 23 March 2017, 11am

In 2022 we will open the doors on a brand new Museum of London in West Smithfield. Join curator Kate Sumnall as she shares the rich and fascinating story of these buildings and the unique place this area holds in London history. Also find out the latest news on our own exciting plans.

Clore Learning Centre, Museum of London, 150 London Wall, London EC2Y 5HN  
**Free, Friends only**



March



### Secret London Tour with London Blue Badge Guide, Diane Burstein

Thursday 30 March 2017, 11am

Explore some secret nooks and crannies of the City borders including a private visit to explore a hidden part of the Roman Wall, a courtyard with links to Agatha Christie, a 'new' old house, a road which isn't part of London and the remains of one of London's notorious 'rookeries'.

Meet outside St Paul's station (exit 1)  
**Friends £11, guests of Friends £15**

April



### Paupers, pilgrims and priories

Wednesday 5 April 2017, 6.30pm

Discover the evidence for religion in Medieval London using archaeology from a number of religious priory sites. Topics covered will include items of prayer, life at priories and their role as hospitals, using site archives such as St Mary Merton Priory, St Mary Graces and riverside deposits of pilgrim badges.

Mortimer Wheeler House, 46 Eagle Wharf Rd, London N1 7ED  
**Friends £8, guests of Friends £12**

